

HOME[®] USA italia A

YOUR PASSPORT TO WORLD LUXURY

A JOURNEY AROUND THE WORLD TO DISCOVER
UNIQUE STYLES AND PLACES TO LIVE.

WELCOME TO:

- COSTA RICA
- DENMARK
- FLORIDA
- INDIA
- ITALY
- ISRAEL
- JAPAN
- NORWAY
- RUSSIA
- UKRAINE

2

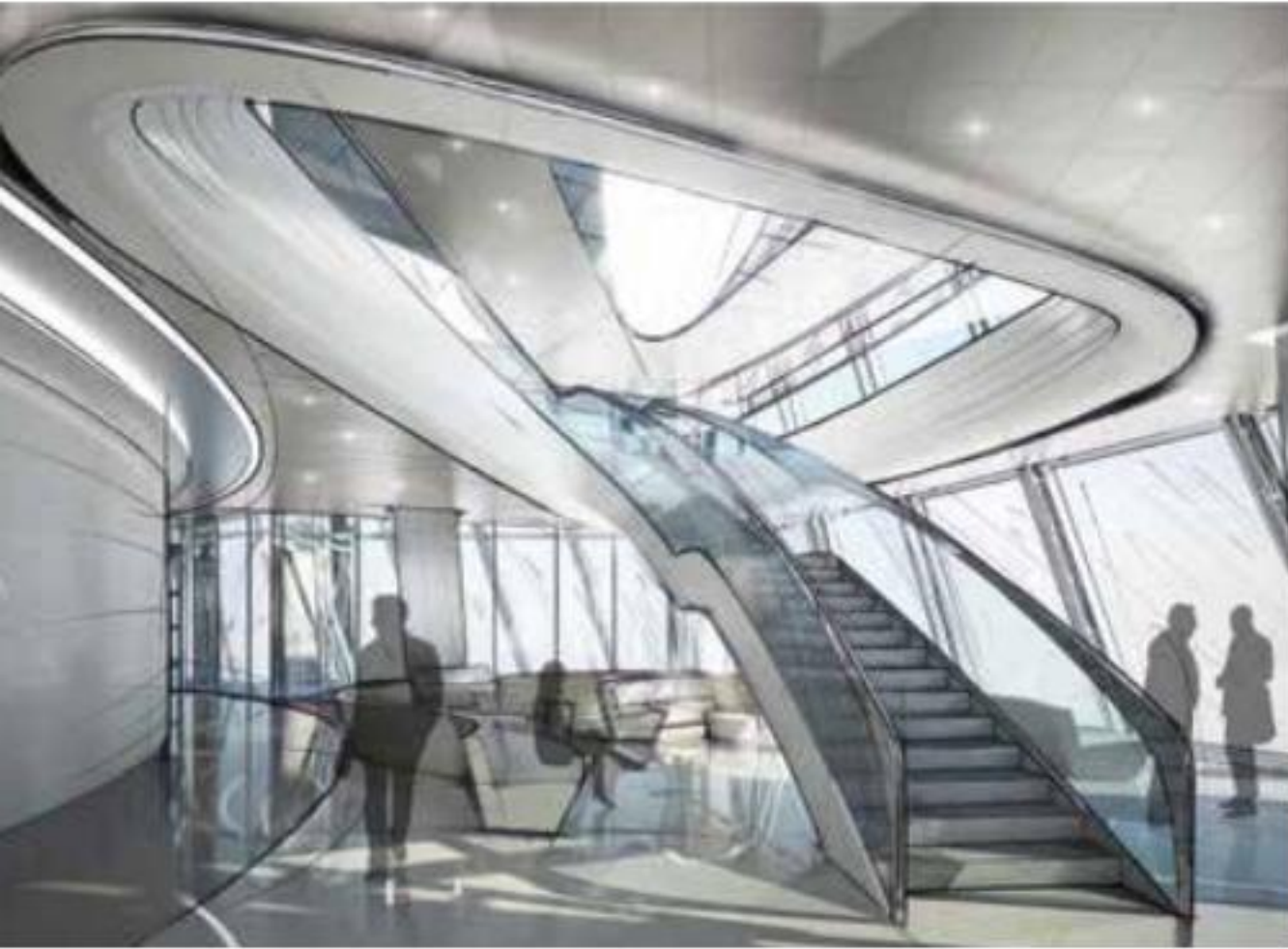
September/
November

USA EDITION

THE LAKHTA CENTER'S

AN ELEGANT INTERIOR DESIGN TRANSFORMS
ITS ARCHITECTURE INTO AN OPEN-AIR MASTERPIECE

Project by Fabio Mazzeo Architects Srl + Exclusiva (fit Out)
Words Barbara Musso



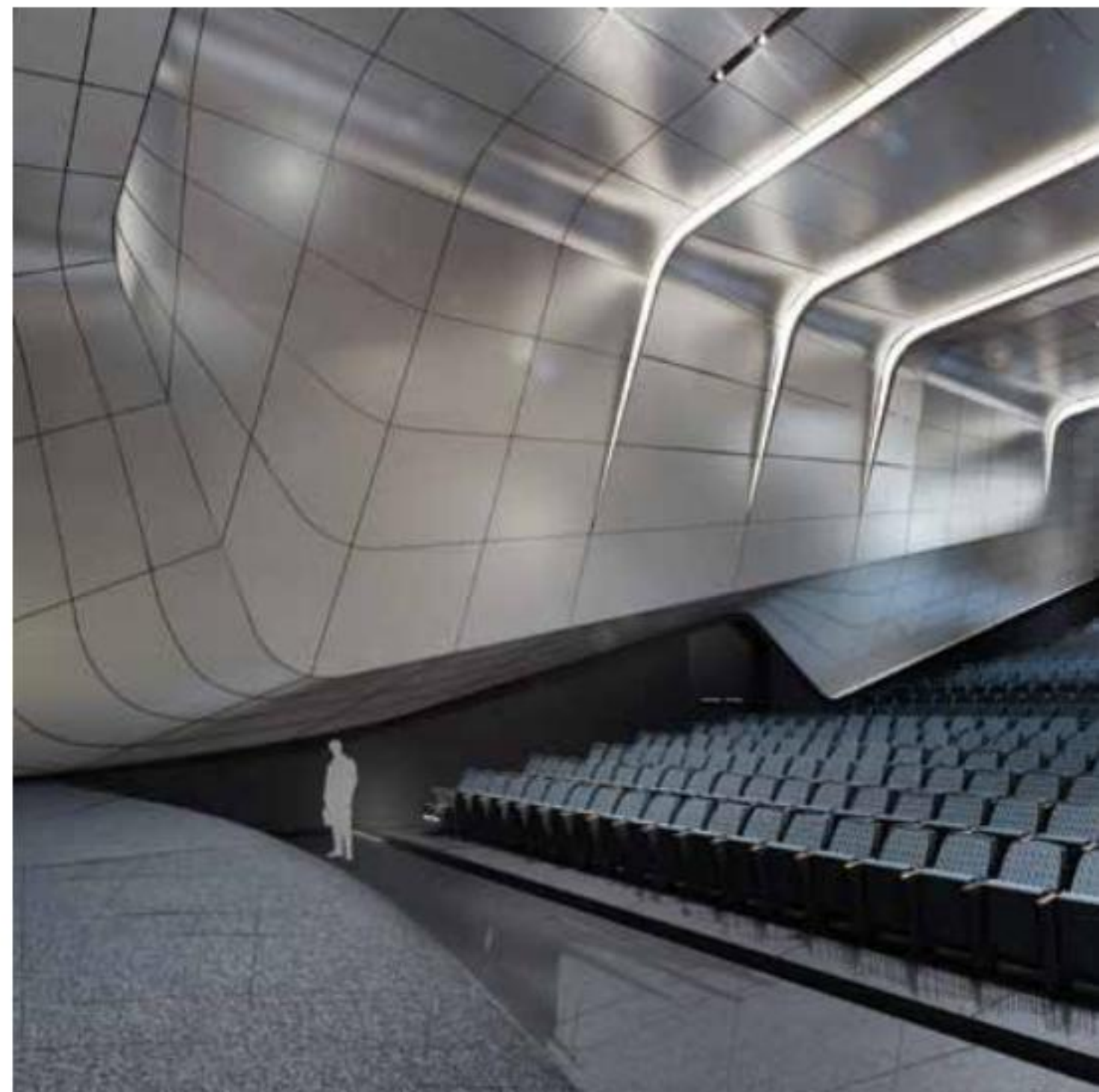
On the shore of the Gulf of Finland, twelve kilometers outside St. Petersburg, the Lakhta Center stands out boldly against the horizon. Surrounded by an enchanting natural landscape – sunrises and sunsets reflecting off the sea, shadows cast by the moody cloud banks rolling in from the north – this multi-functional complex of over 310,000 square feet was designed “in the future, for the future.”

Prestigious international design studios from every corner of the industry, selected through a public tender, collaborated on the center's construction. It is a futuristic work in both the technological and artistic sense: the original design brief called for it to be “up-to-date for the next fifty years.”

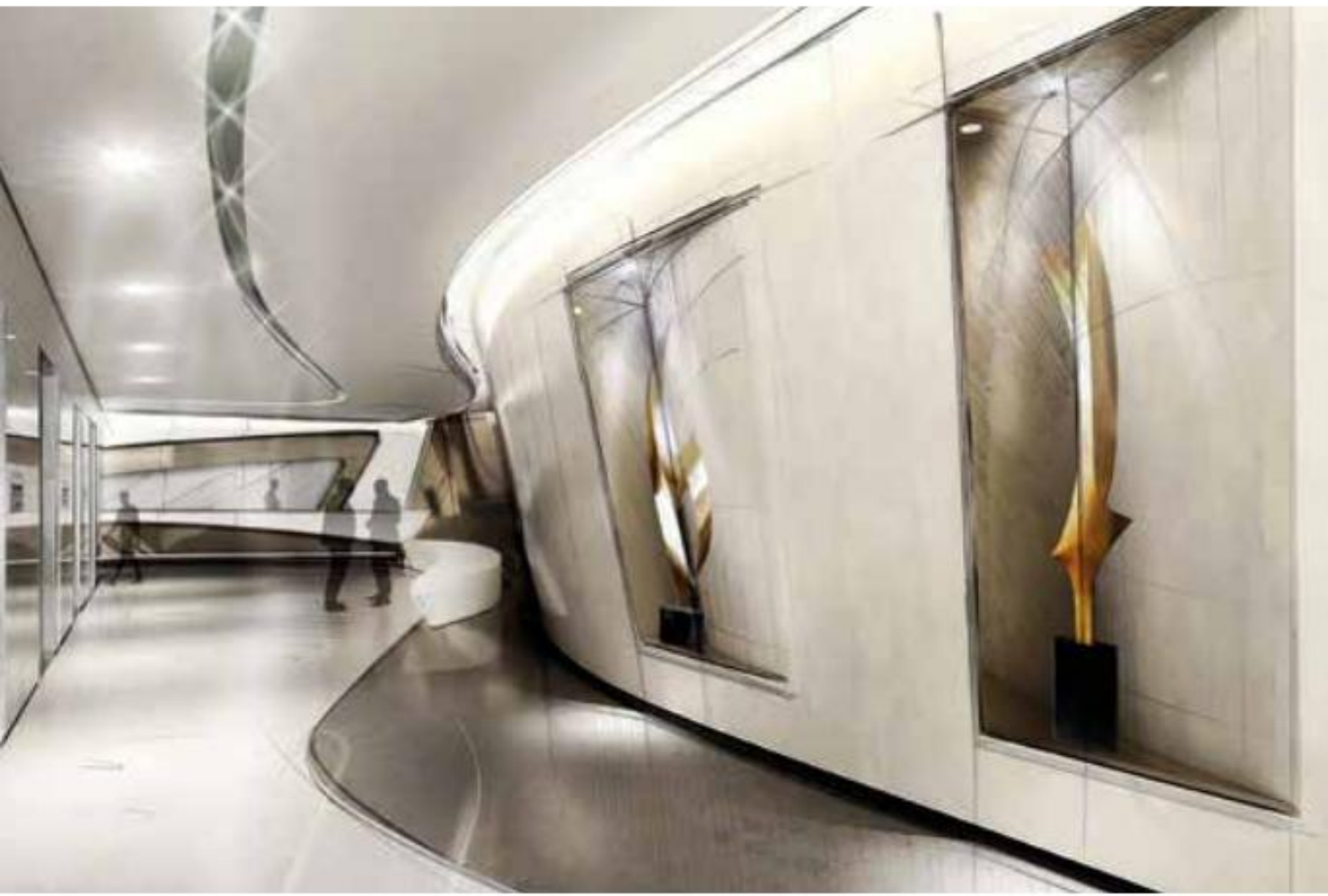
Fabio Mazzeo, creative director of the prestigious Italian luxury-architecture “design lab” Fabio Mazzeo Architects (FMA), was awarded the job of designing the center's over 310,000 square feet of public space by the general contractor Exclusiva on the originality and strength of his proposal. “A good design is the result of a shared and wide-ranging creative experience, and the beauty that comes from it is not a privilege, but an opportunity the likes of which we should all feel an urgent need for,” says Mazzeo about the collective project.

The scenic “Sky Lobby” at the top of the tower and its public, commercial, educational, professional and recreational spaces will all be designed by Mazzeo's firm, as will service areas like parking lots, stairs and sanitary facilities.

The natural characteristics of the building's location strongly inspired the architect's choices for its interior design. The fluidity of the spaces plays with that of the structure itself in a theatrical key, offering visitors a panoramic perspective from the spectacular access areas.







Empty spaces and solid volumes alternate in harmonious balance through steel structural elements shaped into sculptures. Harmonious and organic walkways connect the various areas of the complex and open up surprising paths towards the sea. The interior spaces seem as if they were drawn by a single, continuous line, unfurling quickly and smoothly from the base of the tower up towards its highest point.

Bold technological choices have emphasized a "green" approach that meets the Lakhta Center's functional and aesthetic needs. High-performance, semi-reflective double-glazed windows guarantee thermal and acoustic insulation and ensure significant savings in terms of energy and natural resources. Local stones like gray and black marble allow the landscape to permeate into the building, where inlaid ceramics and walls in sculptural acrylic materials describe unexpected, weightless spaces.

Finishing touches of adamantine light, trees and plants surrounded by evocative sounds, and multimedia impressions complete the aesthetic, celebrating the elegance of this timeless space.



